

Waverly 21 - Gable

HOME & LAND PACKAGE

\$1,052,500*

Home	198m ²
Land	453m ²
Bed	4
Bath	2
Living	2
Car	2

Lot 1260
 White Oak
 Avenue (North
 Harbour)
 Burpengary
 East

Inclusions

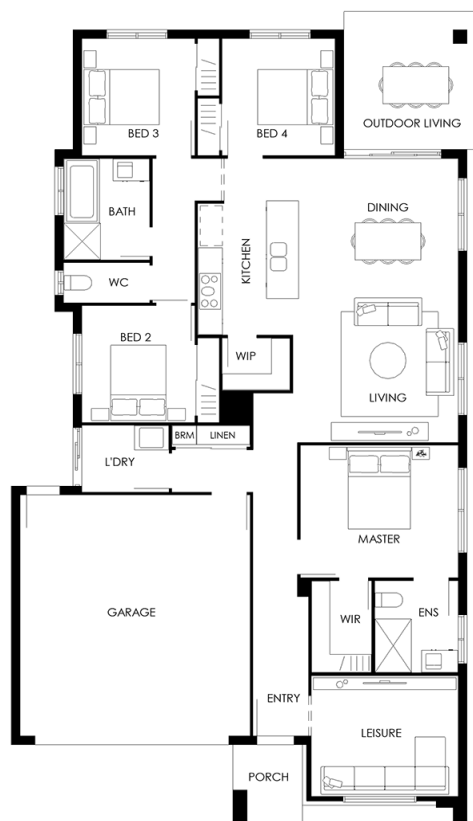
- 20mm Silica-Free Stone Benchtops to Kitchen, Ensuite and Bathrooms
- 2590mm Ceiling Height
- 900mm Stainless Steel Appliances
- Up to 45m² Exposed Aggregate Driveway
- Airconditioning to Main Living areas
- Ceiling Fans Throughout
- Clothesline and Letterbox
- Colours by Creation Design Studio Appointment
- High Quality Floor Coverings Throughout
- Insect Screens to Openable Windows
- LED Lighting Throughout
- Site Cost Allowance
- Plus Much More!

Contact

Cameron Dart
 cdart@creationhomes.com.au
 0431568978



creationhomes



NEW PARTNERSHIP

creationhomes
 X resolve.
 finance

T&C'S APPLY. QBCC 1272561.



The plan & design of this house is owned by Creation Homes & under the copyright act of 1968 cannot be reproduced in any shape or form without prior written authorisation from Creation Homes. Any doing so will be liable for action under the act. Plans shown are indicative only and are subject to minor change in the interest of product improvement. Images and floorplans are not to scale and are for marketing purposes only. Items such as landscaping, paving and driveway may not be included. *Price current as of 02/04/2026 and is based on Developer supplied Engineering/Subdivision plans, for land that was available at time of package generation. Packages may be created on forthcoming land subject to Developer release schedules, and package may not be valid on the exact land mentioned if sold prior to release or on release date. Please consult your New Home Specialist for current details and availability updates. Price does not include stamp duty, government, legal or bank charges. Creation Homes (QLD) Pty Ltd Builder's License: QBCC 1272561. *All financial services provided by Resolve Financial Solutions Pty Ltd trading as Resolve Finance ABN 65 079 545 378, Australian Credit Licence No. 385487